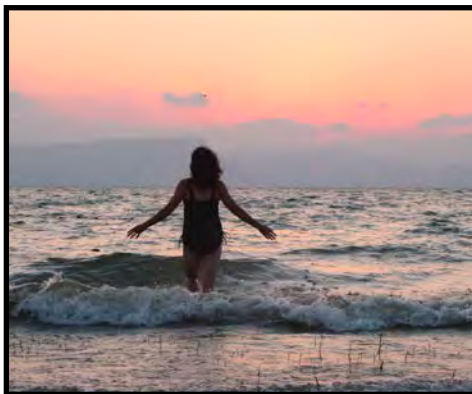


Writing The River

"My soul has grown deep like the rivers"

A Pilgrimage and Writer's Workshop



April
2 -13
2024

Three published Presbyterian writers invite you to come along on a very special pilgrimage to Israel and Palestine. Our unique journey will take us into the places and spaces that formed Jesus and framed his ministry. This is a complex story. To help us learn, we will also engage with the "living stones," the people of today who work for peace and some local writers. We will live into the words of Langston Hughes, quoted above, and slow down to go "deep like a river." There will be time and guidance for reflection and writing. We will stay in three places - Bethlehem, Jerusalem and on the Sea of Galilee. Every day we will venture out to tour and worship. One day we will renew our baptism in the Jordan River. Another we will hike toward the Jordan's source. We will take a boat ride on the Sea of Galilee. And visit the well of Jacob, Rachel, Leah and the Samaritan woman. As we travel and worship, one of the authors will lead us in reflection and writing. So, come write the river with Ruth, Terrlyn, Carol and Anne.

"No [one] ever steps in the same river twice, for it's not the same river and [they are] not the same [person.]. Heraclitus



Writing Leadership

Rev. Ruth Everhart - rutheverhart.com

Rev. Dr. Terrlyn L. Curry Avery - sacredintelligence.com

Rev. Carol Howard Merritt - carolhowardmerritt.org

gadihadanitouringservices.com

will be our tour operator.

cell 011 072 528 7747

Gadihadani1@gmail.com.

Rev. Anne Weirich, is a member of the Presbytery of Southern New England, HR.

She has organized and led pilgrimages with Gadi Hadani since 2008, and will provide orientation, coordination and worship leadership.



Price per person, based on 20 - 24 travelers for

9 nights in a double room, \$3720 per person.

Single room supplement (limited availability,) \$980.

\$500 refundable deposit is due ASAP.

Pay here: <https://onrealm.org/bedfordpreschurch/-/form/give/Pilgrimage>

A non-refundable balance of \$3220 is due by January 17, 2024.

For a registration form and to view the itinerary, use the menu buttons at <https://www.writers-pilgrimage.com/>

The price includes all guides, transfers, hotels, tips to driver, guides and hotel, 4 special lunches, breakfast and dinner daily, bus with wifi, personal listening device, entrance fees and closing dinner.

The price does not include: airfare (flights to be suggested) alcoholic or soft drink beverages, a few free will offerings, and remaining lunches.

PSNE travelers are eligible for scholarship - click here:

<https://forms.gle/YUHGKD7s4DsmuDe46>